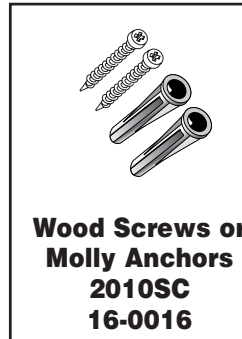
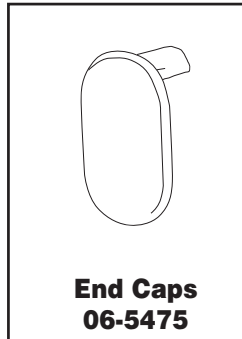
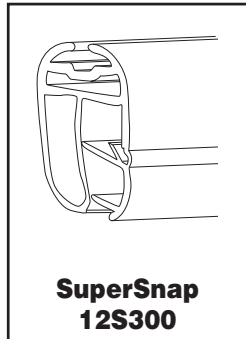


## Parts



## Instructions for assembly

### Step 1

Snap the SuperSnap open and insert poster (top and bottom). **Fig. 1**  
**Note:** It is easier to open and close the SuperSnap by starting at one end and working your way down the holder.

### Step 2

To close, snap the SuperSnap shut. **Fig. 2**

### Step 3

Push end caps into place. **Fig 3**

### Step 4

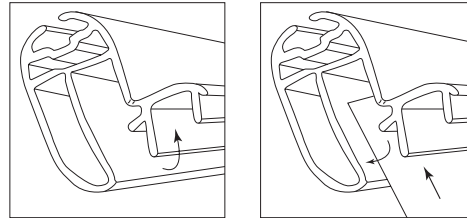
Install Wall Mounting Hangers using wood screws and a Phillips head screwdriver. Make sure that the Wall Mounting Hangers are level. **Fig. 4**  
**Note:** The use of Molly Anchors are recommended for drywall installations (predrilling 3/16" holes is necessary).

### Step 5

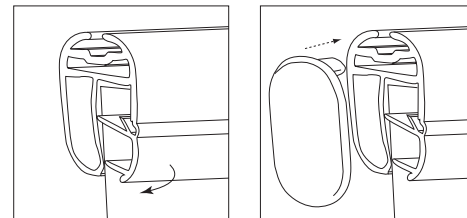
Suspend poster.

### Important note:

Please save and reuse the SuperSnap, End Caps, and Wall Mounting Hangers for future projects.

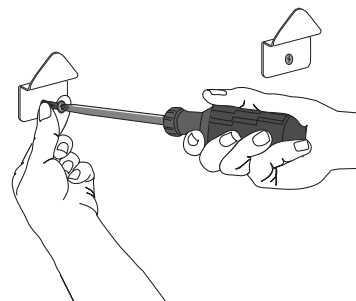


**Figure 1**



**Figure 2**

**Figure 3**



**Figure 4**