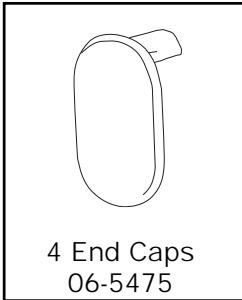


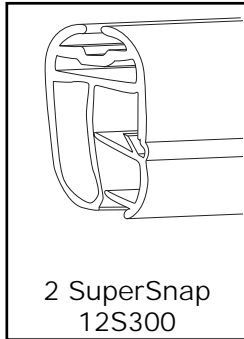
SuperSnap™ with AnoConnector

Instruction Sheet

Parts



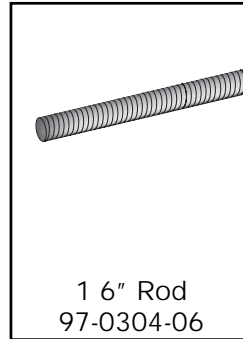
4 End Caps
06-5475



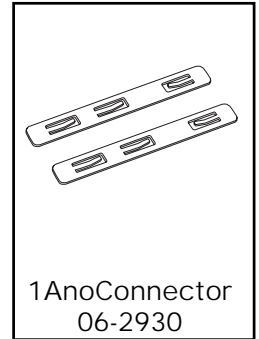
2 SuperSnap
12S300



2 MultiClips
1UP-0101



1 6" Rod
97-0304-06



1 AnoConnector
06-2930

Instructions for assembly

Step 1

Squeeze sides of MultiClip together. **Fig. 1** Align the bottom rail of the MultiClip with the top channel of the plastic holder. Slide MultiClip into rail. **Fig. 2**

Note: Position MultiClip about halfway down each SuperSnap. **Fig. 3**

Step 2

Insert AnoConnector into rail of one SuperSnap. Make sure tabs face upward. The side with one tab must go in first. **Fig. 4**

Step 3

Insert threaded rod halfway into clip rail of the same SuperSnap. **Fig. 5**

Step 4

Push the second piece of SuperSnap onto both AnoConnector and the threaded rod. Push together until both holders meet. **Fig. 6** Repeat steps 2-4 for additional SuperSnaps.

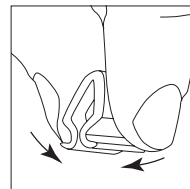


Figure 1

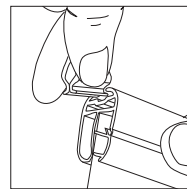


Figure 2

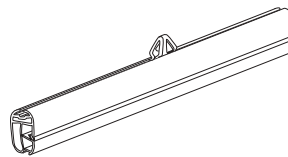
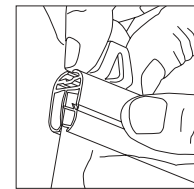


Figure 3

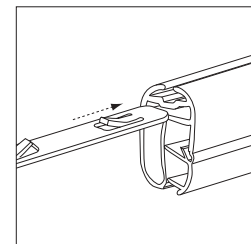


Figure 4

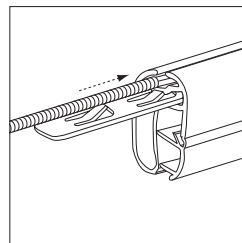


Figure 5

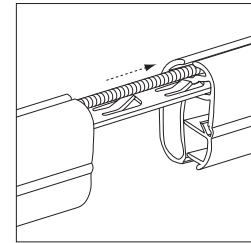
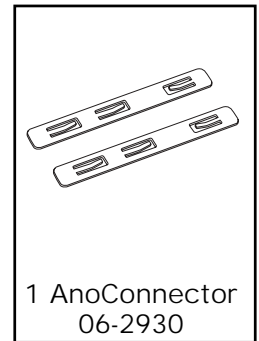
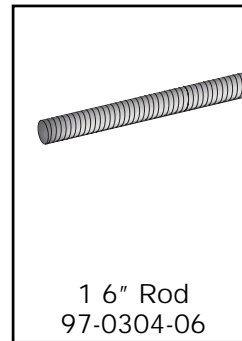
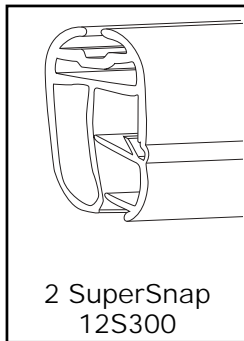
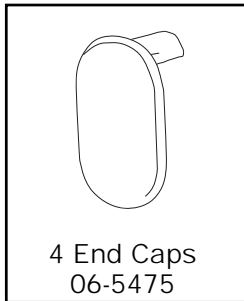


Figure 6

SuperSnap™ with AnoConnector

Instruction Sheet

Parts



Instructions for assembly (continued)

Step 5

Snap all sections of the SuperSnap open. **Fig. 7**

Note: It is easier to open and close the SuperSnap by starting at one end and working your way down the holder.

Step 6

Insert graphic into one section of SuperSnap (top and bottom). **Fig. 8**

Step 7

To close, snap the SuperSnap shut. **Fig. 9**

Step 8

You should now have one graphic in place. Repeat steps 5-7 for hanging additional graphics.

Step 9

Push end caps into place. **Fig 10**

Step 10

Suspend holders. **Finished Look**

Important note:

Please save and reuse the SuperSnap, End Caps and MultiClips for future projects.

