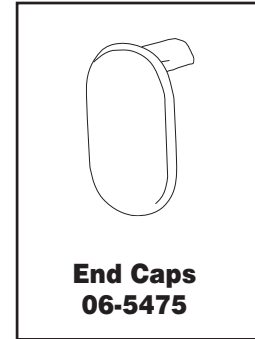
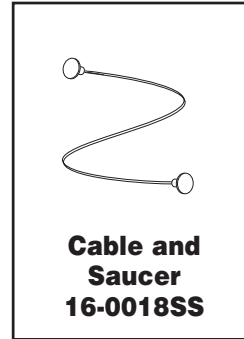
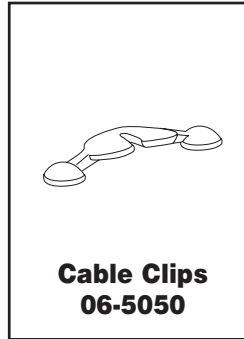
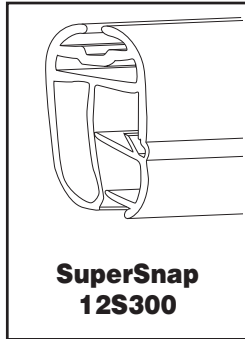


## Parts



## Instructions for assembly

### Step 1

Snap the SuperSnap open and insert poster (top and bottom). **Fig. 1**

**Note:** It is easier to open and close the SuperSnap by starting at one end and working your way down the holder. To close, snap the SuperSnap shut. **Fig. 2**

### Step 2

Place cable into inner channel of CableClip. The cable should snap into place. **Fig. 3**

### Step 3

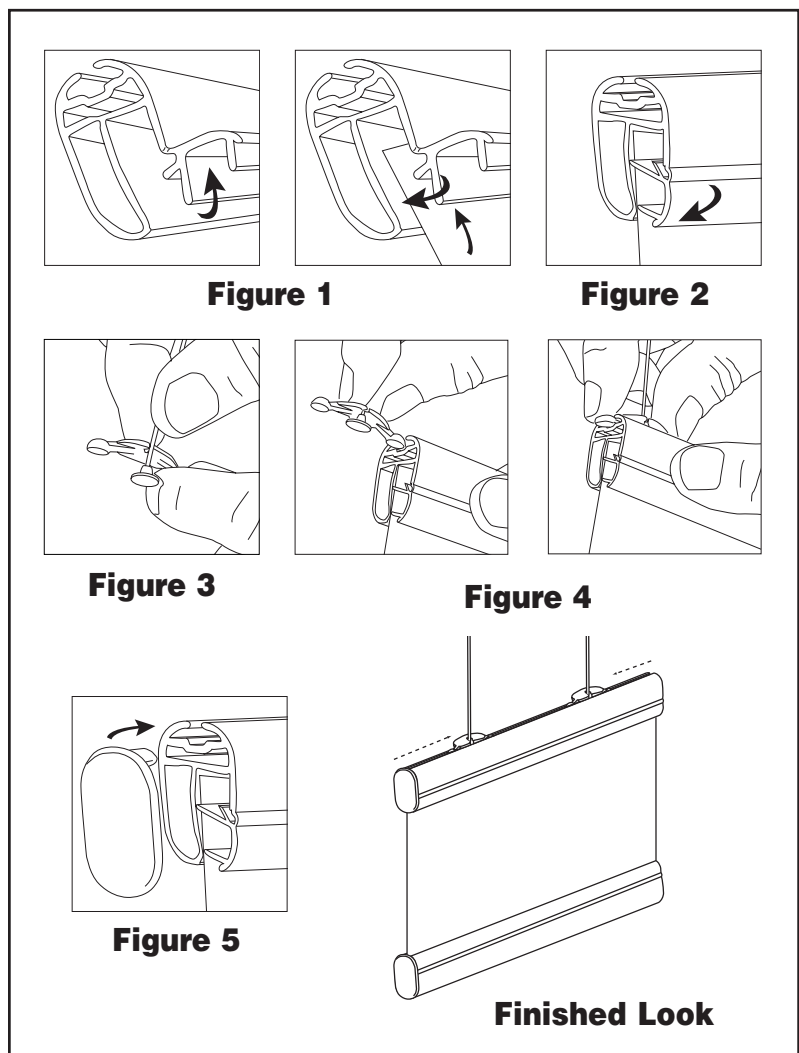
Align one end of the CableClip with the top channel of the plastic holder. Then insert one round end, press down on the other round end and slide CableClip into rail. **Fig. 4** Repeat steps 2 & 3 for second CableClip.

### Step 4

Push end caps into place. **Fig 5**  
Suspend poster. **Finished Look**

### Important note:

Please save and reuse the SuperSnap, End Caps and CableClips for future projects.



The SuperSnap™ is a trademark of Rose Displays, Ltd. Neither the manufacturer nor any sales agent may be held liable for injury, loss or damage resulting from the use of these products.  
Part #02INSSuperSnapCCSaucer

**rose displays**

*The Signware Specialists*

35 Congress Street, Salem, MA 01970  
Tel# 1- 800 631-9707 Fax# 1-800-560-2890  
e-mail:signware@rosedisplays.com